

QUANTIFIABLE EDGES SUBSCRIBER LETTER

ASSESSING MARKET ACTION WITH INDICATORS AND HISTORY

October 1, 2025

Volume 18 Issue 186

Signals Overview

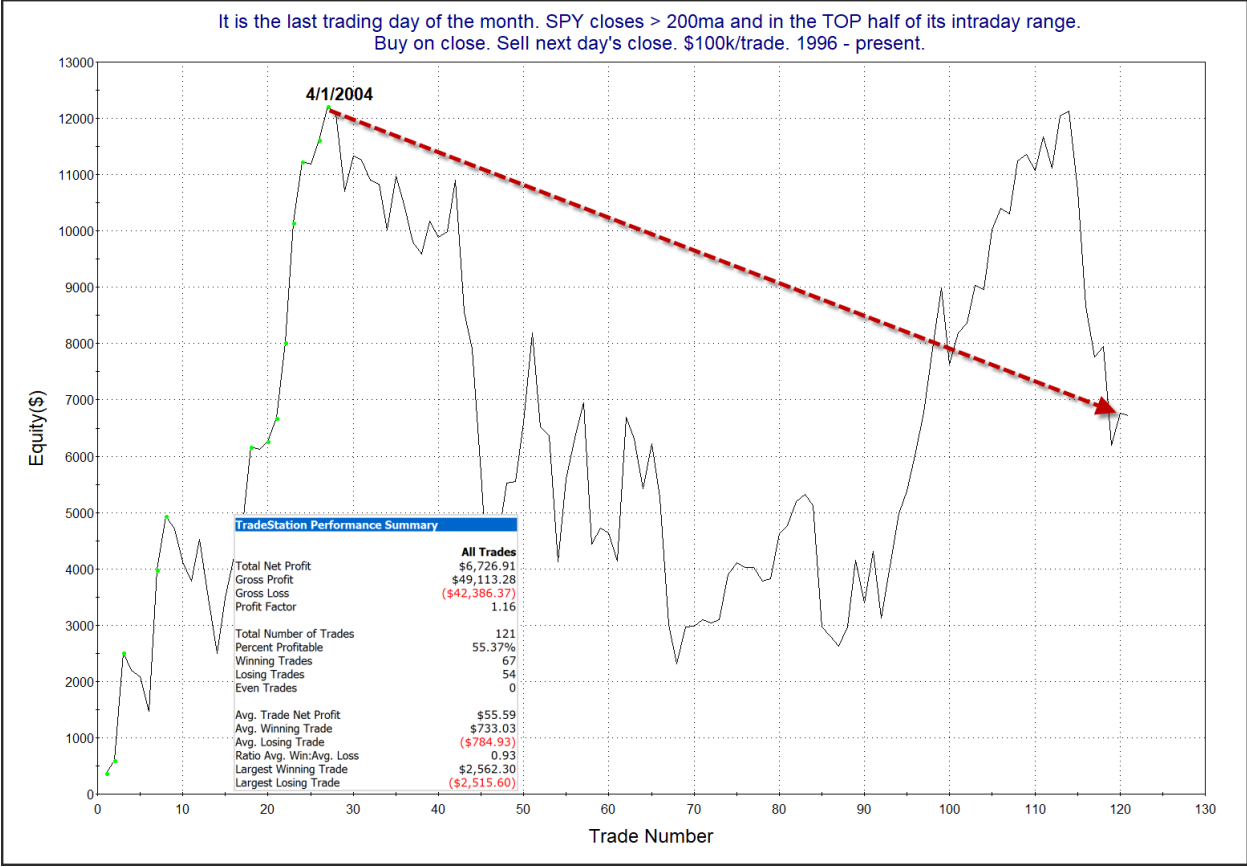
Aggregator	CBI Reading
Flat	4

The Bottom Line

The Aggregator is neutral. So am I.

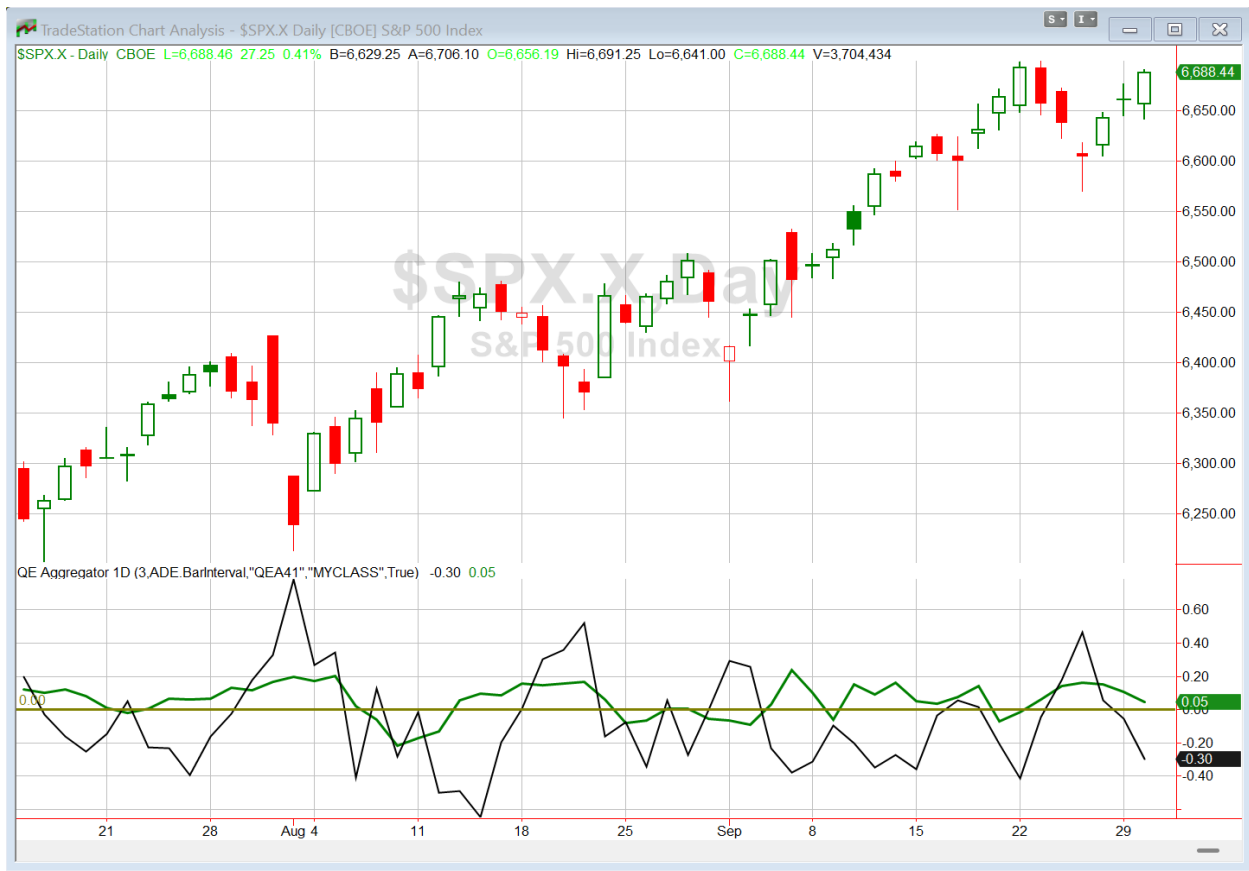
The Evidence (abbreviated)

Last night I showed how SPY has delivered strong performance on the 1st day of the month when it has closed in the lower half of its intraday range on the last day of the month. But when the last day of the month closed strongly (like it did on Tuesday) then performance for the 1st day of the new month did not show an edge. SPY closed near the top of its range on Tuesday. Here is the matching study I showed last night...



Not appealing. No new studies are being added to the active list tonight, since nothing else triggered either.

I have updated [the Aggregator chart](#) below.



- The Aggregator remained neutral tonight.
- The Differential Pivot will be 6673.91 (0.2% below Tuesday's close).
- A close below the Differential Pivot would turn SPX from overbought to oversold.
- I am not viewing this as a compelling setup, and am not taking any action on index trades.

*Intermediate-term Outlook (2 weeks – 2 months) – updated 9/22 – **bullish***

Catapult and Capitulative Breadth Statistics

[Catapult & CBI Presentation Link](#)

Open Catapult Triggers

LOW – 1/3 @ \$260.39 (bought @ limit)

LOW – 1/3 @ \$259.81 (bought @ limit)

LOW – 1/3 @ \$257.33 (buy @ limit)

HD – 1/3 @ \$409.77 (buy @ limit)

Broad Market Large Cap CBI – 4 (LOW-3, HD)

Additional New Trade Ideas

None tonight.

Current Open Trade Ideas

Symbol	Entry Date	Entry Price	Current Price	% Gain/Loss	Notes
LOW(1/3)	9/23/2025	\$259.56	\$251.31	-3.18%	Catapult
LOW(1/3)	9/24/2025	\$258.29	\$251.31	-2.70%	Catapult
LOW(1/3)	9/25/2025	\$257.33	\$251.31	-2.34%	Catapult
HD(1/3)	9/25/2025	\$406.79	\$405.19	-0.39%	Catapult

DISCLAIMER: PAST PERFORMANCE, WHETHER ACTUAL OR TESTED, DOES NOT GUARANTEE FUTURE RESULTS, PROFITABILITY, OR CORRELATION TO ANY LISTED SECURITY OR TRADE IDEA.

This publication is produced by Quantifiable Edges, LLC (QE), and is intended solely for informational and educational purposes. It is a regularly issued impersonal financial research commentary, and should not be construed as personalized investment advice, a solicitation to buy or sell securities, or a recommendation tailored to any individual's financial circumstances. Data provided by Tradestation and Norgate Data. The information presented herein is believed to be accurate at the time of publication, but QE makes no representation or warranty as to its completeness or reliability. Opinions, data and analyses are subject to change without notice. Readers are encouraged to conduct their own due diligence and consult with a qualified financial professional before making investment decisions. There is a high degree of risk in trading and simulated performance results have certain inherent limitations. Unlike an actual performance record, simulated results do not represent actual trading or the results of a specific account or group of accounts. Because these trades may not have been executed, results could misrepresent the effects of market factors like liquidity. Simulated trading programs in general are also subject to the fact that they are designed with the benefit of hindsight. No representation is being made that any account will or is likely to achieve results like those shown. QE, its officers and employees do not accept responsibility for any direct or consequential loss resulting from the use of this information.

Mr. Robert Hanna, author of the publication, is separately affiliated with Eastsound Capital Advisors, LLC (ECA), doing business as Capital Advisors 360. ECA is registered as an investment adviser with the Securities and Exchange Commission (SEC). ECA provides individual client services only in states in which it is filed, or which an exemption or exclusion from such filing exists. Registration with the SEC does not imply a certain level of skill or training. Although ECA clients utilizing the approaches developed by Mr. Hanna incidentally receive the QE Gold Subscription at no charge, ECA does not sponsor, endorse or validate its content. Mr. Hanna and/or his clients may hold positions in securities (including derivatives) mentioned herein; however, such holdings are not intended as endorsements and may change without notice and/or differ from published study indications at the sole discretion of Mr. Hanna. No part of this publication may be reproduced, redistributed, or republished without prior written consent from QE.

Copyright © 2025 Quantifiable Edges, LLC.